

HDD Converters & Brackets

AOK-TS1

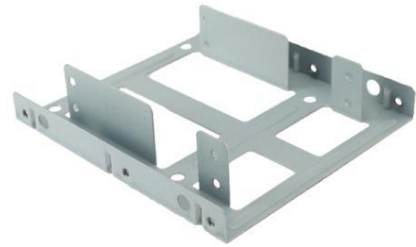
Metal Mounting Kit

■ Specification

Internal 2.5" to 3.5" H.D.D. Metal Mounting Kit
 Quick and easy installation
 Convert any 2 x 2.5" h.d.d. into a 3.5" drive bay
 For use in 3.5" internal drive bay
 Maximize space within your computer case
 Screw pack included to mount the drives
 Dimensions: 4.5" (114.3 mm) L x 4" (101.6 mm) W x 0.5" (12.7 mm) H
 Weight: 0.20 lb (90.7 g)
 Color: Silver

■ Package

Slide blister card, bracket, screws



AOK-TS1B

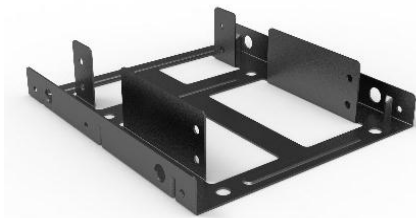
Metal Mounting Kit

■ Specification

Internal 2.5" to 3.5" H.D.D. Metal Mounting Kit
 Quick and easy installation
 Convert any 2 x 2.5" h.d.d. into a 3.5" drive bay
 For use in 3.5" internal drive bay
 Maximize space within your computer case
 Screw pack included to mount the drives
 Dimensions: 4.5" (114.3 mm) L x 4" (101.6 mm) W x 0.5" (12.7 mm) H
 Weight: 0.20 lb (90.7 g)
 Color: black

■ Package

Slide blister card, bracket, screws



AOK-TS3

Plastic Mounting Kit

■ Specification

Internal 2.5" to 3.5" H.D.D. Dual Plastic Mounting Kit
 Quick and easy installation
 Compatible with all types of 2.5" hard drives
 For use in 3.5" internal drive bay
 Maximize space within your computer case
 Screw pack included to mount the drives
 Material: Plastic
 Dimensions: (101.6 mm) L x (12.7 mm) W X(5.5 mm) H
 Weight: 0.15 lb (68 g)

■ Package

Color card PE bag, screws



AOK-TS5

2-bay PCI-E Frame for 2.5" IDE/SATA HDD/ SSD

■ Specification

Convert 1 PCI-E slot into 2 x 2.5" IDE/SATA HDD/SSD mounting bracket
 Support any 2.5" IDE/SATA HDD/SSD
 Make full use of your open PCI slot
 Supported 2 x 2.5" HDD
 Dimensions: 4 11/16" (L) x 3 7/8" (W) x 1 1/8" (H)120 (L) x 101 (W) x 29 mm (H)
 Weight: 0.12 lb (57.2g)
 Application: 2 x 2.5" HDD/IDE/SATA Device

■ Package

Slide blister card, bracket, screws



AOK-TS6

Plastic Mounting Kit, 5.25"

■ Specification

Internal 3.5" to 5.25" H.D.D. Dual Plastic Mounting Kit
 Quick and easy installation
 Convert any 2 x 2.5" h.d.d. into a 5.25" drive bay
 For use in 5.25" internal drive bay
 Screw pack included to mount the drives
 Material: Plastic
 Dimensions: 5 7/8"L x 5 1/2"W x 1 3/4" H
 Weight: 0.20 lbs

■ Package

Color card PE bag, screws



HDD Converters & Brackets

AOK-TS7

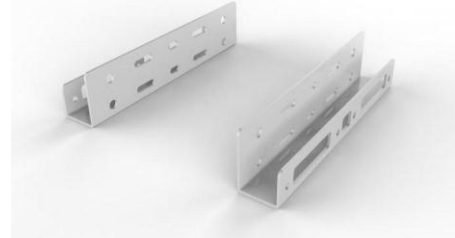
Metal Mounting Kit

■ Specification

Internal 2.5" to 3.5" H.D.D. Dual Metal Mounting Kit
Quick and easy installation
Compatible with all types of 2.5" hard drives
For use in 3.5" internal drive bay
Material: Metal
Dimensions: 4" (101.6 mm) L x 0.5" (12.7 mm) W x 5/3" (5.15 mm) H
Weight: 0.15 lb (68 g)
OS – Windows 98/ME/2000/XP/Vista/7/8 Sever 2008 – Linux
Color: Silver

■ Package

Color card PE bag, screws



AOK-TS8

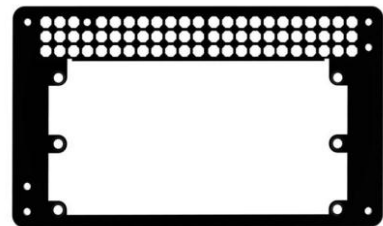
SFX to ATX Power Supply Adapter Bracket

■ Specification

Adapts SFX PSU to fit ATX (PS2) PSU mounting holes.
Designed for use in most ATX or Micro-ATX cases.
Uniquely offsets SFX PSU mount to increase available case space.
Material: 0.8mm SECC
Dimensions: 150mm (L) x 10mm (H) x 86mm (W)
5.90" (L) x 0.39" (H) x 3.39" (W)
Color: Black
Application: ATX Power Supply Adapter

■ Package

Color card PE bag, screws



AOK-TS9

AM 2/3 Socket Retention Mounting Bracket Kit

■ Specification

Compatible with AMD AM 2 & AM 3 Motherboard
Socket: For AM 2 / AM 3
Material: Plastic
Color: Black
Product Dimensions: 4.9" (L) x 3.9" (W) x 1.2" (H)
Weight: 2.4 oz

■ Package

Color card PE bag, screws

